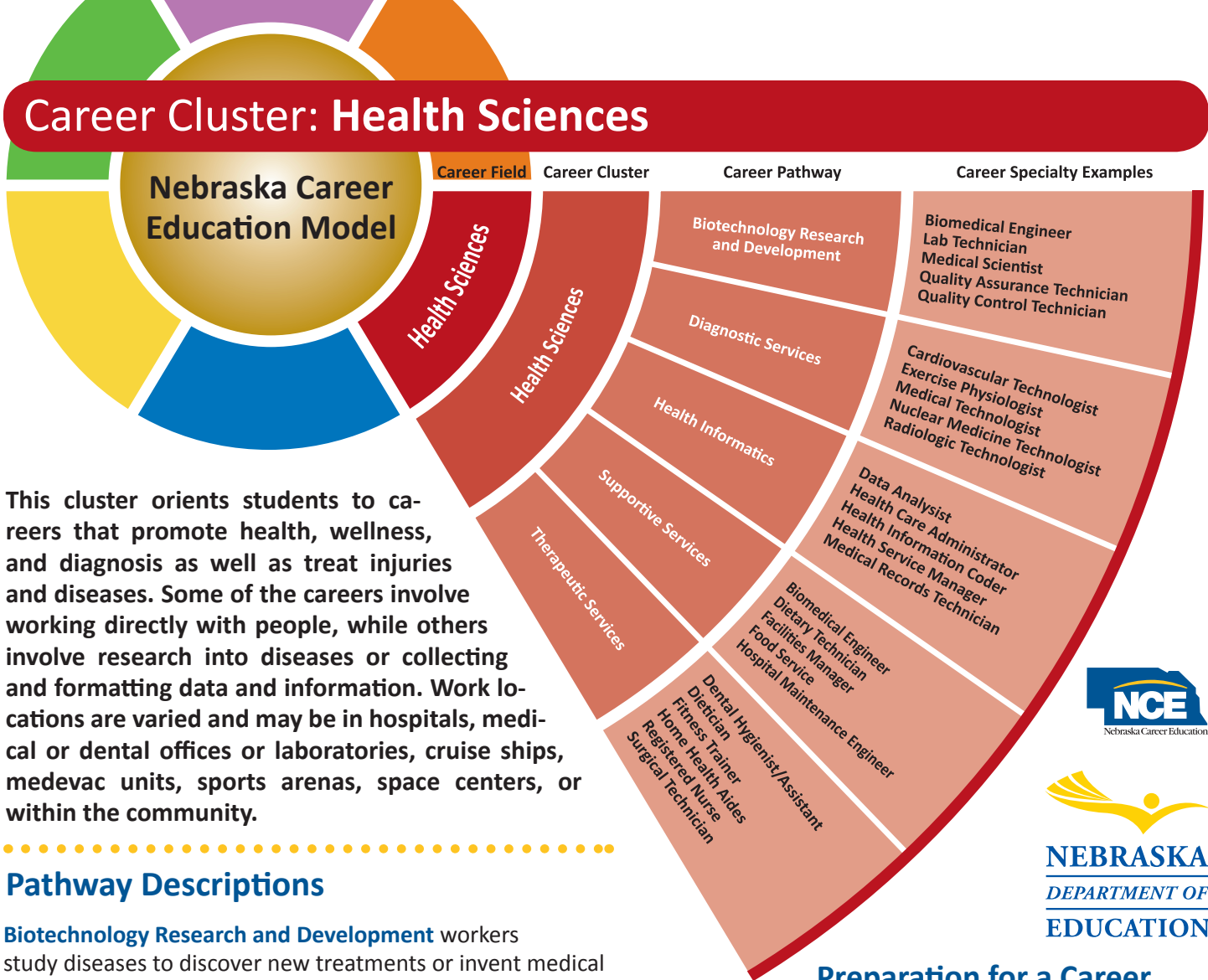


Career Cluster: Health Sciences



This cluster orients students to careers that promote health, wellness, and diagnosis as well as treat injuries and diseases. Some of the careers involve working directly with people, while others involve research into diseases or collecting and formatting data and information. Work locations are varied and may be in hospitals, medical or dental offices or laboratories, cruise ships, medevac units, sports arenas, space centers, or within the community.

Pathway Descriptions

Biotechnology Research and Development workers study diseases to discover new treatments or invent medical devices used to directly assist patients or to improve the accuracy of diagnostic tests.

Diagnostic Services workers use tests and evaluations that aid in the detection, diagnosis and treatment of diseases, injuries or other physical conditions.

Health Informatics workers occupy many different levels of health care related employment. This pathway includes health care administrators who manage health care agencies as well as those individuals who are responsible for managing all of the patient data and information, financial information, and computer applications related to health care processes and procedures.

Support Services workers provide a therapeutic environment for the delivery of health care. Support Services offers a full range of career opportunities from entry level to management, including technical and professional careers.

Therapeutic Services workers are focused primarily on changing the health status of the patient over time. Health professionals in this pathway work directly

Preparation for a Career in this Cluster Includes...

Nebraska Career Education Coursework

- Introduction to Health Sciences
- Exploring Clinical Lab
- Medical Terms
- Biotechnology
- Advanced Health Science
- Health Information Technology
- Introduction to Sports Medicine
- Personal and Community Health Issues
- Nursing Assistant Certification (CNA)
- Emergency Medical Technician Basic (EMT-B)
- Medication Aide
- Clinical Nutrition

Extended Learning

- Athletics
- Family, Career and Community Leaders of America (FCCLA)
- Health Occupations Students of America (HOSA)
- Medical Explorers
- Wellness Club
- Take First Aid Courses
- Health Science Camps
- Certified CPR Classes
- EMT Certification
- NE Safety Patrol-Mock Disasters
- Health Fairs
- Job shadow professionals
- Participate in internships
- Secure part-time employment
- Volunteer in this career area

For additional Career Cluster Information visit: www.nebraskacareerconnections.org.



Postsecondary Options: Health Sciences

Students preparing for a career in the Health Science Career Cluster have a variety of postsecondary options. Education and training can be obtained through on-the-job training, technical colleges, two-year community colleges, four-year colleges/universities, and apprenticeship programs. They can enter programs leading to a certificate or a degree at the associate, baccalaureate, or advanced degree level. The table below shows examples of postsecondary Health Science programs of study organized by pathway.

	High School Diploma On-the-Job Training	Certificate/License	Associate's Degree	Bachelor's Degree	Master's/Doctoral Professional Degree
Biotechnology Research and Development		Quality Assurance Technician Quality Control Technician	Clinical Laboratory Medical Laboratory Technician (CLT) Technician (MLT)	Biochemistry Immunology Medical Technology Microbiology Neuroscience	Anatomy Biochemistry Oncology Biology Virology Epidemiology
Diagnostic Services	Clinical Rotation	Electrocardiograph Technology Nuclear Medical Technology Radiology Technologist	Cardiovascular Technology Medical Laboratory Assisting Nuclear Medical Technology	Biology Medical Imaging Technology Medical Laboratory Science Nutrition	Cardiovascular Technology Diagnostic Radiology Medical Laboratory Science Nuclear Medicine
Health Informatics	Coding Experience Data Entry Community Service	Health Records Technology Medical Assisting Medical Librarian Medical Transcription	Health Information Technology Medical Coding Medical Office Services	Community Health Health Care Administration Health Education	Health Care Administration Library Science Nursing Administration Public Health
Support Services	Central Services Assistant Dietary Manager Electrical/Electronic Equipment Repair	Dietary Management Electrical/Electronic Equipment Repair Medical Office Management	Dietary Management Medical Office Management Registered Dietetic Technician	Biomedical Technology Environmental Health & Safety Prosthetic Therapies	Environmental Health Sciences Industrial/Operations Engineering Public Health
Therapeutic Services	Clinical Rotation Dental Assisting Health Aide Medical Assistant	Certified Nurses Aide Dental Assisting Licensed Practical Nurse Massage Therapy	Dental Hygiene Licensed Practical Nursing Pre-Medicine Surgical Technology	Athletic Training/ Exercise Science Dietetics Pre-Medicine Recreational Therapy	Clinical Nutrition Dentistry Medicine Nurse Anesthetist Pharmaceutical Services



For additional information on the Health Sciences Career Cluster please contact:

Carol Ringenberg
Health Sciences
Career Field Specialist

Nebraska Department of Education
301 Centennial Mall South
Lincoln, NE 68509

Phone: 402-471-4813
Email: carol.ringenberg@nebraska.gov
Web: www.education.ne.gov/healthscience/index.html