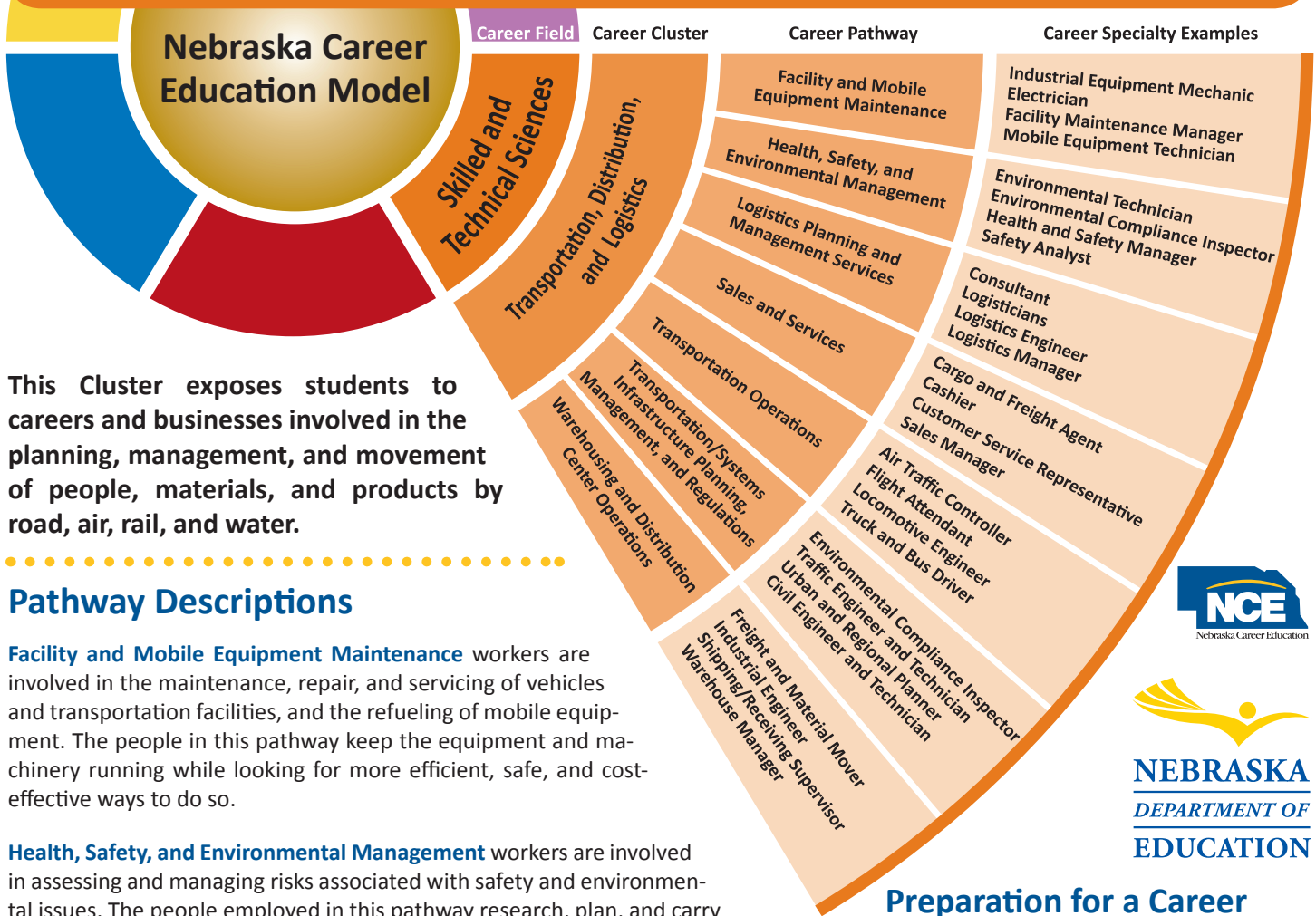


Career Cluster: Transportation, Distribution, and Logistics



This Cluster exposes students to careers and businesses involved in the planning, management, and movement of people, materials, and products by road, air, rail, and water.

Pathway Descriptions

Facility and Mobile Equipment Maintenance workers are involved in the maintenance, repair, and servicing of vehicles and transportation facilities, and the refueling of mobile equipment. The people in this pathway keep the equipment and machinery running while looking for more efficient, safe, and cost-effective ways to do so.

Health, Safety, and Environmental Management workers are involved in assessing and managing risks associated with safety and environmental issues. The people employed in this pathway research, plan, and carry out activities to make our environment safer and cleaner.

Logistics Planning and Management Services workers are involved in the planning, management, and control of the physical distribution of materials, products, and people.

Sales and Services workers are involved in the marketing and selling of transportation services to new customers as well as the management of existing customer relationships and customer service.

Transportation Operations workers drive or pilot the vehicles that transport people and freight.

Transportation/Systems Infrastructure Planning, Management, and Regulation workers deal with all aspects of the design and operation of our public transportation systems--road, air, sea, and rail. These functions are primarily the responsibility of people who are employed by federal, state, and local transportation agencies.

Warehousing and Distribution Center Operations workers focus on the operation of transportation and distribution facilities including ports, terminals, warehouses, and other types of facilities. All cargo needs to be tracked, sorted, labeled, and loaded accurately and safely. Timing is also important, since many loads must adhere to a schedule in order to satisfy the needs of the customer.



Preparation for a Career in this Cluster Includes...

Nebraska Career Education Coursework

- Introduction to Energy, Power and Transportation
- Business Logistics
- Transportation Technology, Service and Maintenance
- Distribution and Logistics
- Automotive Body Repair and Refinishing
- Emerging Technology in Transportation and Logistics

Extended Learning

- SkillsUSA
 - Ford/AAA Auto Skills
 - OPPD/NPPD PowerDrive
 - VEX Robotics
 - FFA
 - Math Club
 - Learn to drive a tractor or truck to do farmwork
 - Learn automotive repair and maintenance
 - Read automotive and mechanical magazines
 - Take Drivers Education
 - Learn to operate a forklift
-
- Job shadow professionals
 - Participate in internships
 - Secure part-time employment
 - Volunteer in this career area

For additional Career Cluster Information visit: www.nebraskacareerconnections.org.

Postsecondary Options: Transportation, Distribution, and Logistics

Students preparing for a career in the Transportation, Distribution, and Logistics Career Cluster have a variety of postsecondary options. Education and training can be obtained through on-the-job training, technical colleges, two-year community colleges, four-year colleges/universities, and apprenticeship programs. They can enter programs leading to a certificate or a degree at the associate, baccalaureate, or advanced degree level. The table below shows examples of postsecondary Transportation, Distribution, and Logistics programs of study organized by pathway.

	High School Diploma On-the-Job Training	Certificate/License	Associate's Degree	Bachelor's Degree	Master's/Doctoral Professional Degree
Facility & Mobile Equipment Maintenance	Auto Body Repair Automotive and Diesel Technology	Auto Body Repair Auto Mechanics Aviation Airframe Maintenance Industrial Maintenance Electronics	Aeronautical and Aerospace Engineering Technology Automotive Technology Aviation Airframe Maintenance Electronic Technology	Engineering Industrial Engineering Mechanical Engineering	Industrial and Management Systems Engineering Mechanical Engineering
Health, Safety, & Environmental Management			Environmental Engineering Technology	Engineering Physics Environmental Engineer Environmental Science Environmental Studies Industrial Engineering	Environmental Engineering Environmental Science Environmental Studies
Logistics Planning & Management Services		Business	Business Administration Industrial Technology Logistics and Materials Management	Business Administration Industrial Distribution Industrial Technology Management Technology Operations Management Logistics and Materials Management	Engineering Management Industrial and Management Systems Engineering Operations Management
Sales and Service	Cashier Customer Service Travel Agent	Desktop Publishing Entrepreneurship Parts, Sales, and Management Travel Services	Business Marketing Marketing Management Parts, Sales, and Management	Advertising Business Marketing	Advertising Business Marketing
Transportation Operations	Taxi Driving Locomotive Engineering Bus Driving Truck Driving	Air Traffic Control CDL Driver Training Class A, B Commercial Pilot and Flight Crew Training Vehicle and Equipment Operations	Air Traffic Control Commercial Pilot and Flight Crew Training	Air Traffic Control	
Transportation Systems Infrastructure Planning, Management, & Regulation			Civil Engineering Surveying and CAD	Aviation Systems Management Civil Engineering Maritime Sciences Naval Architecture and Marine Engineering	Civil Engineering Engineering Management Naval Architecture and Marine Engineering
Warehousing & Distribution Center Operations	Shipping and Receiving Storage and Distribution	CDL Driver Training Class A, B Forklift Training	Business Logistics and Materials Management Warehouse Management	Business Logistics and Materials Management	Logistics and Materials Management

For additional information on the Transportation, Distribution, and Logistics Career Cluster please contact:

Tony Glenn
Skilled and Technical Sciences
Career Field Specialist

Nebraska Department of Education
301 Centennial Mall South
Lincoln, NE 68509

Phone: 402-471-4819
Email: tony.glenn@nebraska.gov
Web: www.education.ne.gov/STS